



Interior

Our homes are where we live our private life.
An interior is a reflection of the characters that reside there, their personalities, their style, their dreams, their inspiration.

Responsive to trends – but yet
intensely individual. Your interior tells the story of you.
There is always a Lisianthus for every interior style.

Enjoy our new book, full of designs & inspiration
made for you...





DARK LUXURY

The dark interior trend reveals a love for drama. Darkness is the backdrop for explosions of pure colour, with spectacular contrasts. Rich, dramatic colours and textures show luxury and passion. Lisianthus adapts beautifully to this theme with deep, rich purples, blues, reds and pinks that really stand out when arranged in bright, bold vases in surprising shapes and forms. The delicate romantic flower in the warm, bold colours perfectly demonstrate the contrast that is at the heart of this theme.



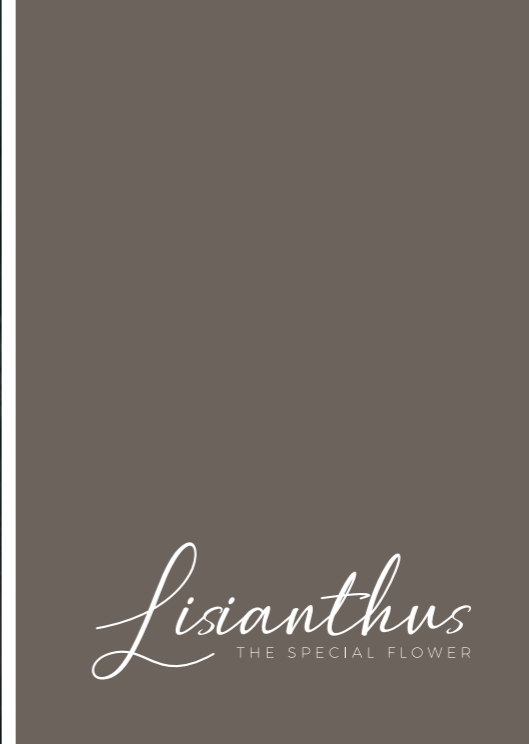






Lisianthus the Interior Flower







WARMTH

'All that glistens is not gold', as the saying goes, and this saying is personified in the interior theme 'warmth'. Everything glistens and glows in the warm interior, from gold, copper and antique silver to rich velvet and corduroy fabrics, soft caramel toned wooden backdrops and of course candlelight. The colours that reflect and warm the onset of autumn.

The warm tones and rich textures of double and fringed Lisianthus blend beautifully into this theme, in the speciality shades of the warmest indoor season.



IN LOVE WITH LISIANTHUS





Warm colours include red, orange and yellow in various shades. As the name suggests, they are reminiscent of warming things, such as sunlight and heat. Optically, warm colours make spaces and objects draw in, or seem closer, as do dark colours, which is why they are often used to make make large rooms feel more cozy.





INDIGO

Banish the Blues? No, welcome them and bring them home! In the interior, feeling blue is a wonderful experience, embracing the endless pallet of gorgeous shades that are the wealth of this versatile colour. From the sky to the sea to your favourite blue jeans, blue envelops us and draws us in to her world. Add some deep violets and delicate lilacs, and the Indigo trend is complete. Did you know that the original Lisianthus was blue? The 'Prairie Gentian', the ancestor of the modern Lisianthus, was the original species from which today's incredible Lisianthus pallet was created. Today's assortment offers a full spectrum for every Blues lover!







Lisianthus
THE SPECIAL FLOWER









The colour Indigo occurs on the light spectrum at a wavelength of 450 to 420 nanometers. According to the traditional division of the spectrum, Indigo lies between blue and spectral violet. This deep shade of blue exudes luxury, matches with many colours and helps relaxation.



A TOUCH OF
BLUE IS
GOOD FOR YOU





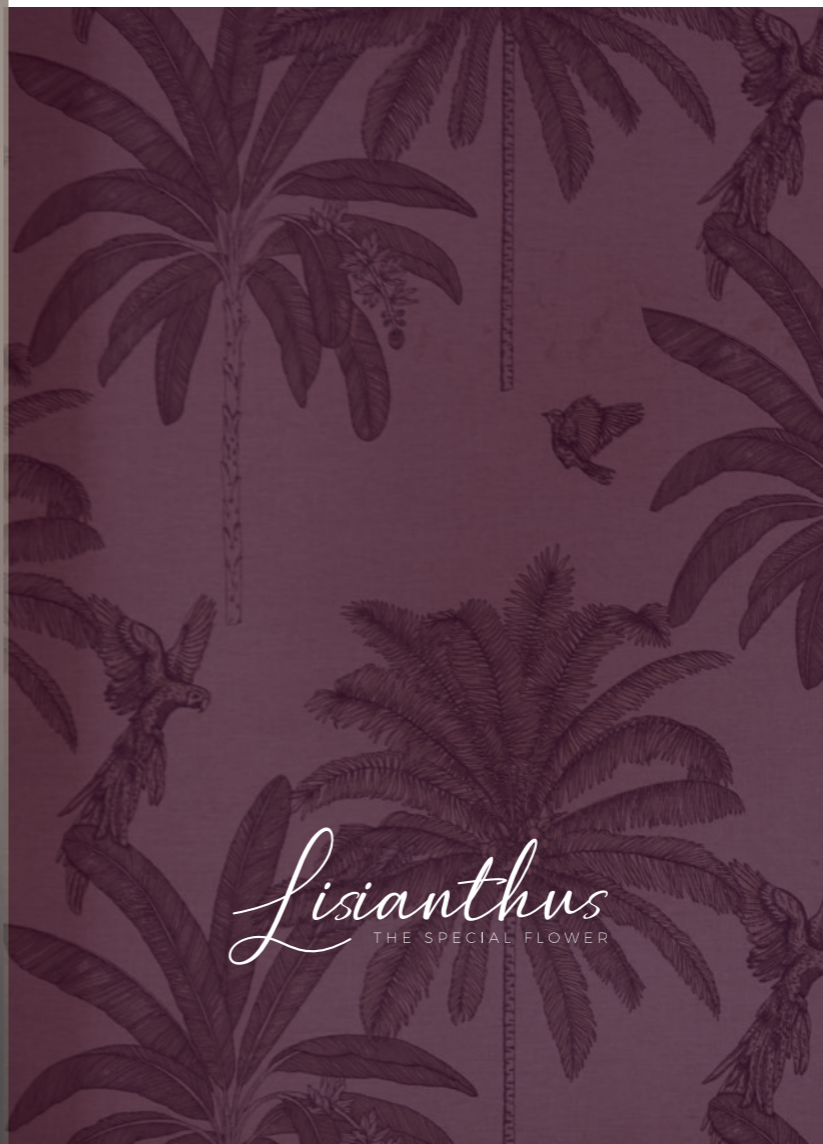
POWDER & PASTELS

Romance is the stuff of every woman's dreams ... and romantic pastels are the inspiration for dreamy interiors. Powder tints are clean, soft and do not have to be pale – think of warm, powdery earth tints like terracotta and sand and natural fibres such as flax or linen. Of course pink is a key theme in every pastel shade imaginable, but also muted greens, apricots and champagne colours add just the right clean, soft atmosphere. Lisianthus is the perfect accompaniment to this feminine and romantic theme, both the delicate shapes and the muted pastel shades add just the right touch to make any interior dream come true.





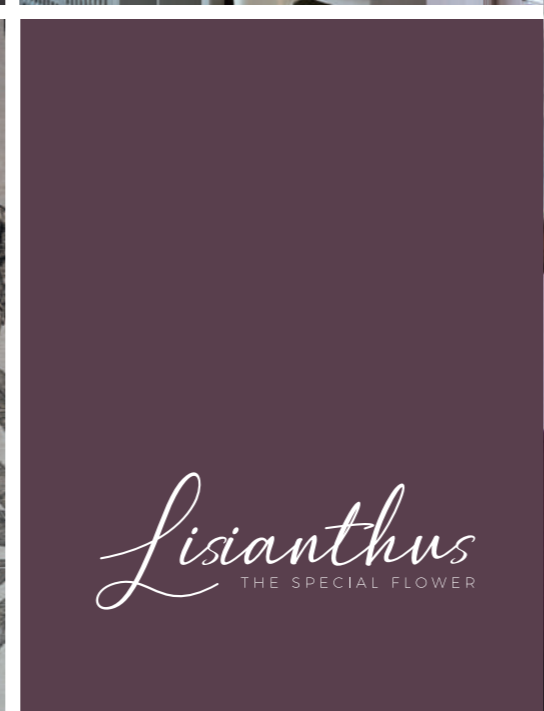








POWDER & PASTELS





LISIANTHUS THE SPECIAL FLOWER



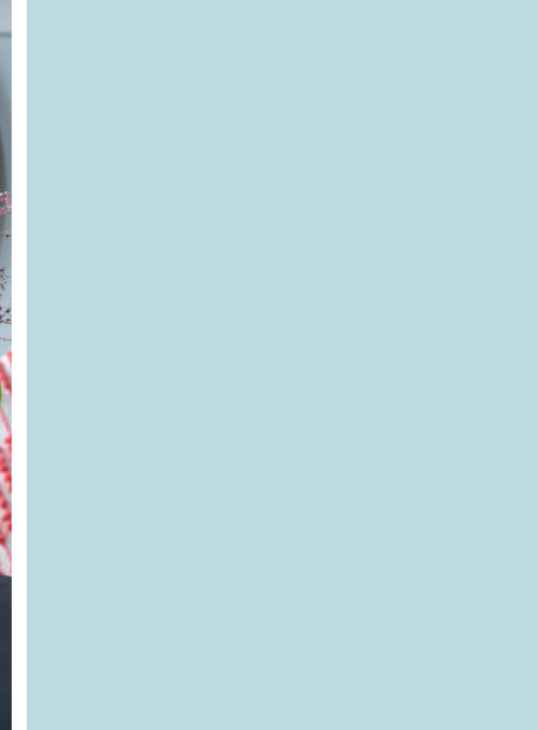


CRISP AND FRESH

Light, bright and fresh – the unmistakable look and feel of Spring and Summer in your interior! Never out of style, the clean, tidy feel of a white backdrop with crisp, fresh accessories and colours means you can almost feel a summer breeze, at any time of year! Clear pinks and corals, fresh greens, a touch of sunny yellow and of course pure, crisp white are the colours that combine beautifully with clean lines and modern materials to create this uncluttered style. Lisianthus is the ultimate floral decoration for this theme, with its fresh colours and clean patterns. Combined with ferns and grasses to soften the look, the feeling of a luxury beach house is complete!









LIGHT, BRIGHT
& FRESH

Pastel colours have a character all of their own and are true chameleons in your interior. The powder tones add calmness, softness and serenity and are seriously stylish.







AUSSENALSTER

As the city grows, and more residential areas are developed, the need for recreation and relaxation grows as well. The area around the Alster Lake, Außenalster, is a refuge for relaxation in the heart of the city - the ideal place for a stroll, a gentle cycle or, for the fitness lovers, a run around the 7km perimeter. On sunny days rowers, sailors and other water sport enthusiasts take to the water, while others enjoy a picnic or just relax on the banks of the lake. Sun, fun and enjoyment are embodied in these Lisianthus creations.



SINGLE COLLECTION

Sometimes less is more!

The single Lisianthus flowers are delicate, smaller than the double varieties but beauties to behold. Delicate looking Lisianthus is strong, and has its roots in the desert - who would have thought?



Piccolo White



Falda White



Piccolo Yellow



Piccolo Green



Falda Apricot



Bohemian Moccha



Falda Salmon



Botanic Pink



Piccolo Hot Lips



Piccolo Violet



Botanic Blue



Piccolo Blue Picotee



Piccolo Lavendel



Bohemian Black Violet



DOUBLE COLLECTION



Prime White



Rosita White



Rosita Yellow



Rosita Green



Arena Champagne



Rosanne Deep Brown



Croma Champagne



Megalo Light Champagne



Corelli Light Pink



Rosita Rose Pink



Sabrina Orange



Rosita Hot Lips



Lisanne Blue Flash



Excaliber Blue Picotee



Arena Blue Picotee



Rosita Blue



Croma Bridac Kiss



Rosita Hot Pink



Arena Light Pink



Cotton Candy



Rosita Lavendel



Croma Lavendel



Corelli Lavender



Rosanne Black Pearl



Excalibur Hot Pink



Arosa Red



Rosita Red



Excalibur Hot Lips



Rosanne Green



For more inspiration, collection availability and downloads of our inspiration pictures visit
www.lisianthus.nl

DOUBLE COLLECTION LARGE FLOWERS

When you look for the perfect flower for an event, then there is no better choice then the double Lisianthus. With it's high volume and more petals then any other flower it is the greatest scene-setter. Below you find our large flowered double selection in two types, the big bloom with more petals and luxury style and our regular double collection.



Alissa White



Celeb Chrystal White



Celebrich White



Alissa Pure White



Giant White



Alissa Champagne



Alissa Light Apricot



Corelli Apricot



Alissa Pink



Celeb Madonna



Corelli Rose



Celeb Grape



Alissa Rose



Alissa Blue



Corelli Blue



Alissa Green



Alissa Yellow

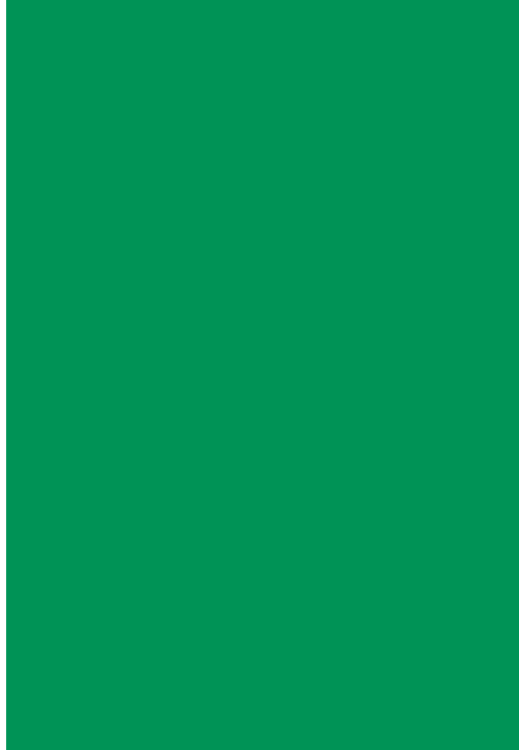


HISTORIC PORT HAMBURG

Hamburg has been a harbour port since the 12th century, when the first river port evolved where the Alster meets the Elbe, not far from the centre of the current HafenCity. In the 17th, 18th and 19th Century the residential areas really developed, and the architecture of that time can still be found all through the area, as a perfect example of old blending with new. The rich, baroque design buildings are maintained in colours evoking the period, warm, bold hues with power colour accents like Emerald Green. Bright, bold Lisianthus tones are the perfect contrast!









HaFenCity
HAMBURG



RENAISSANCE IN THE CITY

A utopian cityscape built into the Elbe river, Hamburg's newest district is Europe's most ambitious development project.

Live, work, shop and dine by the Elbe river. Experience the daily hustle and bustle in one of Europe's most modern quarters.

Sustainable, urban, eclectic, modern and diverse. Just like Lisianthus, HafenCity has it all. Let us take you on a modern renaissance with Lisianthus.





WHERE HARBOUR MEETS CITY

Where the harbour area meets the historical centre of the City, the combination of the water flowing serenely between the docks and the historical buildings creates a calm and a richness that is well matched by fresh tones of white and bright green, accented with peach and orange, with rich gold as an accent to bring back the atmosphere of the golden age gone by. A walk through this part of the city brings serenity and an overwhelming sense of history.







STONE QUAYS & BRICK WAREHOUSES

Where there is a harbour there is trade, and the quays and the warehouses in the Port of Hamburg are evidence of the former bustling trading area. Nowadays incorporated into the modern harbour city, often used for residential or commercial purposes the warm brick tones and the old stone quays are a stark background for the soft but strong hues of the beautiful brown and apricot toned Lisianthus arrangements.





WATERCOLOURS &
PASTELS



Looking out over the harbour area to the water, the old cranes and the industrial backdrop against the blue grey sea are softened and brought gently life by the pastel tones of Lisianthus. Truly a scene worthy of being captured in a watercolour painting.



Lisianthus
THE SPECIAL FLOWER





ALSTERKADEN & RATHAUS

The Alsterkaden are a gleaming tribute to 19th Century architecture and building, and were built as part of the reconstruction of Hamburg after the Great Fire of 1842.

The promenades have a Mediterranean charm, an area where the privileged could live, dine, shop and mingle surrounded by elegance. On the water, one might spot the Alster swans – these majestic white birds were introduced to the area and are still maintained and protected by the city government. There could not be a more fitting backdrop for the grace, style and pure refinement of elegant white Lisianthus.





Lisianthus
THE SPECIAL FLOWER



We hope you enjoyed our Lisianthus the Special Flower book
nr 3. Interior & In the City.

For more information, inspiration, collection availability and
image downloads, please visit

LISIANTHUS.NL

TEAM LISIANTHUS PROMOTION

Creative design, Photography and layout
2design - The Netherlands